

iConnect Media Keyboard & Wireless Laser Mouse

IH-K235LB

Product Knowledge Base



Note: iPod/iPhone compatibility

iPhone 3G – 8GB, 16GB
iPod touch 2nd generation – 8GB, 16GB, 32GB
iPod nano 4th generation (video) - 8GB, 16GB
iPod classic – 120GB
iPod touch 1st generation - 8GB, 16GB, 32GB
iPod nano 3rd generation (video) – 4GB, 8GB
iPod classic – 80GB, 160GB
iPod nano 2nd generation (aluminium) – 2GB, 4GB, 8GB
iPod 5th generation (video) – 30GB
iPod nano 1st generation – 1GB, 2GB, 4GB

device	use insert
iPod nano (1 st , 2 nd , 3 rd and 4 th generation)	1
iPod classic (80GB, 120GB) iPod 5G (30 GB) iPod touch, 1 st and 2 nd generation (8GB, 16GB, 32GB)	2
iPhone 3G iPod classic (160GB) iPod 5G (60GB, 80GB)	3

Frequently Asked Questions (FAQs)

1. What are the Features?

iConnect Media Keyboard

- Charge & sync iPod or iPhone with iTunes
- Control your media with illuminated touch sensitive keys
- 2 rotating USB 2.0 ports provide reachable access for your digital devices
- Ultra slim design

Wireless Laser Mouse

- Plug-n-Play no syncing needed
- 2.4 GHz wireless frequency
- 1200 dpi laser sensor
- Horizontal & vertical scrolling
- power saving On/Off switch
- ultra slim design
- for right or left hands
- Stowable USB nano receiver

2. What is included in the box?

- iConnect media keyboard (USB)
- Wireless laser mouse
- USB nano receiver
- 1 AA Energizer battery

- Inserts for iPod & iPhone (3)
- AC adapter
- User manual
- Quick start guide

3. What are the system requirements?

PC

- Windows XP, Vista or Windows 7
- USB Port

4. Where can I download the latest driver?

Visit www.life-works.com/drivers

5. Where can I find warranty information?

Visit www.life-works.com/warranty

6. How to Connect the Keyboard?

Note: Connect the AC Adapter first.

- Connect the USB cable to the USB port of the computer and the power connector to the AC adaptor and start using the keyboard.

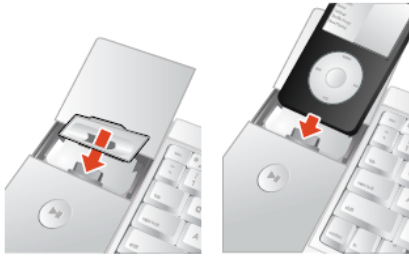
Warning: AC Adapter must be connected all the time when using the keyboard.

7. How to dock your iPod or iPhone?

- 1) Gently slide the dock cover forward.



2) Select the correct insert and insert your iPod or iPhone



Troubleshooting

1. iPhone/iPod does not charge or sync?

- Ensure AC adapter is connected
- Ensure USB cable is connected
- Ensure device is seated separately
- Ensure iTunes is open.

2. Keyboard or USB 2.0 ports do not work?

- Ensure USB cable is connected
- Connect your keyboard to the port on your computer, not to the USB hub
- Ensure AC adapter is connected.

3. Mouse does not work?

- Ensure the USB nano receiver is connected.
- Connect the nano USB receiver to a different USB port.
- Check that the battery is inserted correctly.
- Move the mouse closer to the USB nano receiver.
- Ensure the laser sensor on the bottom of the mouse is clean.
- Install a fresh battery.

4. Mouse low battery indicator (red light) flashing?

- Install fresh batteries

Product Operating Tips

- **Warning:** Always connect the supplied AC Adapter when using the keyboard.
- Use one of the included inserts to make your iPod/iPhone fit securely in the dock.
- Your mouse will operate from as far as 30 feet. (10mt) from your computer.
- To save the battery power, turn off when not in use.
- Store the USB nano receiver under the battery cover for travel or when not in use.