

iConnect Media Keyboard & Wireless Laser Mouse for Mac

IH-K236LS

Product Knowledge Base



Note: iPod/iPhone compatibility

iPhone 3G – 8GB, 16GB

iPod touch 2nd generation – 8GB, 16GB, 32GB

iPod nano 4th generation (video) - 8GB, 16GB

iPod classic – 120GB

iPod touch 1st generation - 8GB, 16GB, 32GB

iPod nano 3rd generation (video) – 4GB, 8GB

iPod classic – 80GB, 160GB

iPod nano 2nd generation (aluminium) – 2GB, 4GB, 8GB

iPod 5th generation (video) – 30GB

iPod nano 1st generation – 1GB, 2GB, 4GB

device	use insert
iPod nano (1 st , 2 nd , 3 rd and 4 th generation)	1
iPod classic (80GB, 120GB) iPod 5G (30 GB) iPod touch, 1 st and 2 nd generation (8GB, 16GB, 32GB)	2
iPhone 3G iPod classic (160GB) iPod 5G (60GB, 80GB)	3

Frequently Asked Questions (FAQs)

1. What are the Features?

iConnect Media Keyboard for Mac®

- Charge & sync iPod or iPhone with iTunes
- Control your media with illuminated touch sensitive keys
- 2 rotating USB 2.0 ports provide reachable access for your digital devices
- One touch function keys allow you to launch iTunes, iChat, Mail, Safari, iCal and Front Row instantly
- Ultra slim design
- Comfortable rubberized wrist rest

Wireless Laser Mouse

- Plug-n-Play no syncing needed
- 2.4 GHz wireless frequency
- 1200 dpi laser sensor
- Horizontal & vertical scrolling
- power saving On/Off switch· ultra slim design
- for right or left hands
- Storable USB nano receiver

2. What is included in the box?

- iConnect media keyboard for Mac (USB)
- Wireless laser mouse
- USB nano receiver
- 1 AA Energizer battery
- Inserts for iPod & iPhone (3)
- AC adapter
- Installation CD
- User manual
- Quick start guide

3. What are the system requirements?

Mac

- OS X 10.5 or later
- USB Port
- CD-ROM Drive

4. Where can I download the latest driver?

Visit www.life-works.com/drivers

5. Where can I find warranty information?

Visit www.life-works.com/warranty

6. How to install the software?

- Insert installation CD.
- Double-click iHome Keyboard icon the installation software will open.
- When Welcome screen displays, click **Continue**.
- Click **Install** to install driver in default location .
- Type your password if asked to do so.
- When prompted, click **Continue Installation**.
- Click **Continue** again.
- Click **Restart** to restart your computer

7 . How to Connect the Keyboard?

Note: Connect the AC Adapter first.

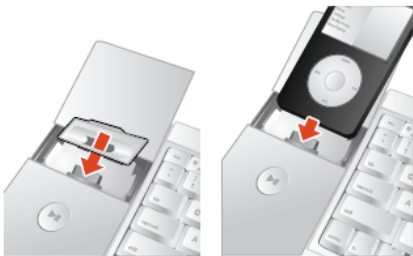
- Connect the USB cable to the USB port of the computer and the power connector to the AC outlet and start using the keyboard.

8. How to dock your iPod or iPhone?

- 1) Gently slide the dock cover forward.



- 2) Select the correct insert and insert your iPod or iPhone



Troubleshooting

1. Mac application keys do not launch?

- Uninstall and reinstall the driver
- Ensure that the application you want to launch is in the application folder.

2. iPhone/iPod does not charge or sync?

- Ensure AC adapter is connected
- Ensure USB cable is connected
- Ensure device is seated separately
- Ensure iTunes is open.

3. Keyboard or USB 2.0 ports do not work?

- Ensure USB cable is connected
- Connect your keyboard to the port on your computer, not to the USB hub
- Ensure AC adapter is connected.

4. Mouse does not work?

- Ensure the USB nano receiver is connected.
- Connect the nano USB receiver to a different USB port.
- Check that the battery is inserted correctly.
- Move the mouse closer to the USB nano receiver.
- Ensure the laser sensor on the bottom of the mouse is clean.
- Install a fresh battery.

5. Mouse low battery indicator (red light) flashing?

- Install fresh batteries.

Product Operating Tips

- **Warning:** Always connect the supplied AC Adapter when using the keyboard.
- Use one of the included inserts to make your iPod/iPhone fit securely in the dock.
- Your mouse will operate from as far as 30 feet.(10mt) from your computer.
- To save the battery power, turn off when not in use.
- Store the USB nano receiver under the battery cover for travel or when not in use.