

iHome multimedia keyboard

Model # IH-K200MB

Product Knowledge Base



Frequently Asked Questions (FAQs)

1. What is included in the box?

- multimedia keyboard (USB)
- Installation CD
- Quick start guide

2. What are the system requirements?

- PC
- Windows XP or Windows Vista
- USB Port
- CD-ROM drive

3. Where can I download the latest driver?

Visit www.life-works.com/drivers

4. Where can I find warranty information?

Visit www.life-works.com/warranty

5. How to connect the keyboard.

- Connect the USB cable to an available USB port on your computer.
 - ❖ The drivers for your keyboard will load automatically.
- Start using your keyboard.

6. How to install the software.

- Insert the installation CD into your computer.
- On the screen of your computer, click on **install**.
- An **InstallShield Wizard** dialog box displays. Click **Next**.
- The **Choose Destination Location** dialog box displays. Click **Next** to accept the default installation location.
- Once installation is complete, restart the computer when prompted.
 - ❖ When the computer restarts , a keyboard icon displays in the system tray

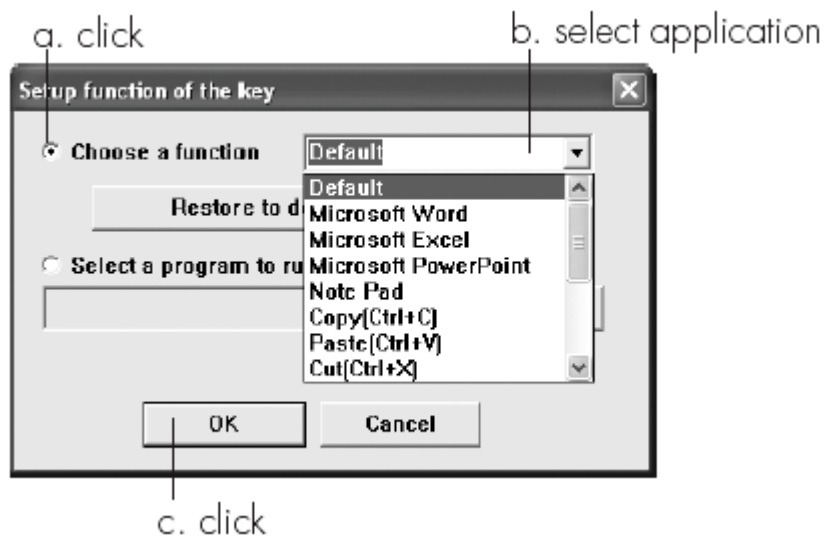
7. How to customize the keyboard.

❖ Your keyboard has 4 programmable buttons.

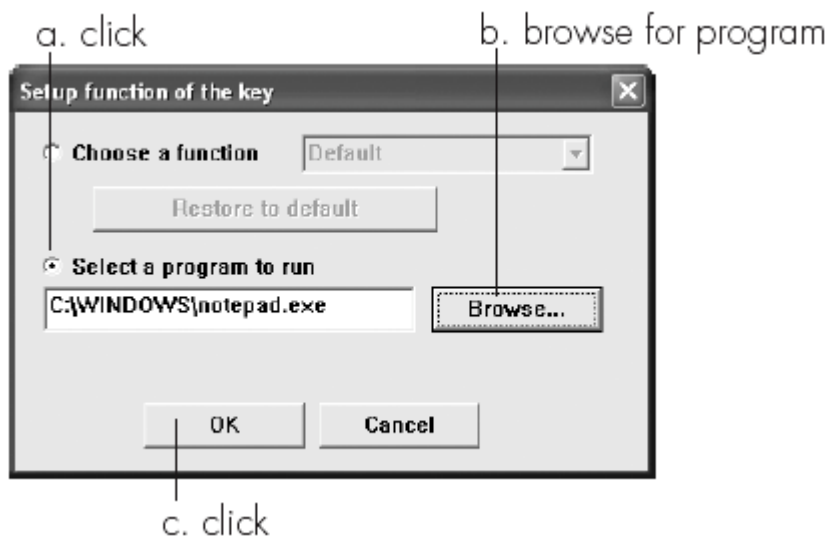
- Double-click on the **keyboard icon** in the system tray (near the time bar on the lower right of your desktop).
- To change the action for a programmable button, click the corresponding icon.



- Select **Choose a function**, then select an application from the drop-down list.



- To have the button run an application not included in the list, select the **Select a program** option, then click **Browse** to navigate to the desired application.



- Click **OK** to accept the changes.

Troubleshooting

1. My Keyboard does not work

- Ensure the USB cable is connected to your computer.
- Disconnect the USB cable, and then reconnect it.
- Connect the USB cable to a different USB port. Try a USB port on the computer, not on a hub.

Product Operating Tips

- Customize the programmable keys on your keyboard for greater functionality.
- Adjust the feet on the bottom of the keyboard to change the angle of the keyboard.

For questions regarding your iHome computer accessory, please visit our website at www.life-works.com or call 1-877-Life-540.

2009 © LifeWorks Technology Group LLC.

iHome™ is a trademark of SDI Technologies Inc. used under license.

Windows Vista® is either a registered trademark or trademark of Microsoft Corporation in the United States and/or other countries.

Mac® is a trademark of Apple Inc., registered in the U.S. and other countries.

All other brands and logos are trademarks of their respective companies.

